

# STABLELOC

## Indication: Distal Radius Fractures

The **Stableloc External Fixator** is a lightweight, radiolucent device for the repair of unstable distal radius fractures. Designed to incorporate the best features of the most popular wrist fixators on the market today, the **Stableloc** allows the surgeon to gain the initial reduction with the fixator in place, and then independently adjust only those planes needing correction. For convenience, the device is packed sterile with everything needed to complete a case, including instrumentation and pins.

**Radial/Ulnar Deviation** is achieved with the distal pin clamp. Grooved slots in the pin clamp allow the pins to be spaced 15mm, 20 mm or 25mm apart depending on the patient. Note: the 25mm drill guide comes standard with the sterile kit. The 15mm and 20mm guides may be ordered separately.

**Flexion** adjustment is controlled with a single ball joint placed at the center of wrist rotation. The ball joint may also aid in the initial reduction by providing the surgeon the tactile sensation of feeling the fracture re-aligning.

**Incremental Length** adjustment facilitates the principal of ligamentotaxis by applying controlled traction across the wrist joint to aid fracture reduction.

**Dorsal/Palmar Translation** applies controlled incremental force through the metacarpals to re-establish the natural palmar tilt of the distal radius. The fixator allows up to 16mm of palmar or dorsal travel.

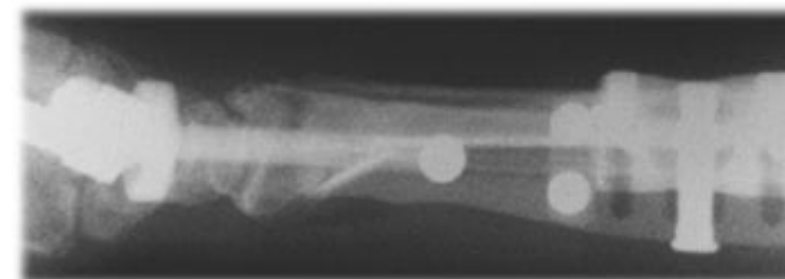
**Secure Fixation** is maintained with four unique 3.2mm pins that may be used as either self-drilling or pre-drilled with the 2.5mm drill provided in every sterile kit. A unique thread geometry facilitates insertion and maximizes bone purchase but will not loosen if the pin needs to be backed out slightly. Optional 2.7mm pins are available on request.

## Sterile Pack



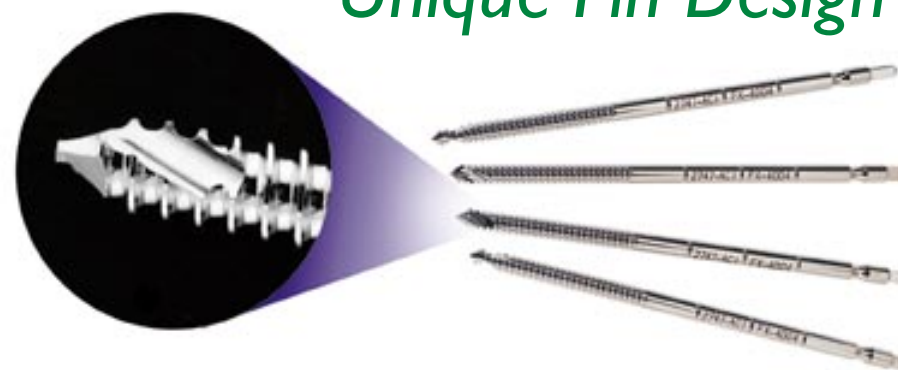
The **Sterile Stableloc System** is a complete and cost effective solution with simple instrumentation.

## Radiolucent



**Radiolucent housing** to aid in fracture visualization for accurate fracture reduction.

## Unique Pin Design



## Cover

The **Stableloc Cover** facilitates patient acceptance.



For many years, external fixation has been a well accepted technique to stabilize a variety of fractures. Acumed is committed to providing unique and innovative fracture management solutions for the upper and lower extremities and has developed a dedicated line of external fixators suited especially for these areas. From our unique Colles management systems to our innovative small bone fixation and distraction units, we designed each system to provide ease of application, stability, and precise fracture reduction.

STABLELOC 2, 3

STABLELOC EX 4

SMALL BONE FIXATOR 5

SMALL BONE DISTRACTOR 6

ORDER INFO / WARNINGS 7

CONTACT INFORMATION 8